



SJ- L869

**Speed Camera/Radar Detector
Security – Tracker – Photo**



No. 12 Wulin Stl, Shulin Dist.,
New Taipei City 238 Taiwan, R.O.C
Tel: 886-2-2684-1569
Fax: 886-2-2684-1567

Sheng Jay Automation Technologies Co., Ltd.



Catalog

Appearance	5
Installation Steps.....	8
Learning the remote control.....	17
Reset the default settings.....	17
Multimedia Message Setting	18
Authorized Number	20
SOS – Send MMS Message.....	21
GPS real-time position tracking via mobile.....	22
GPS real-time position tracking via server.....	23
Security Alarm.....	26
Security Alarm sensitivity.....	26
Time Zone.....	27
Geo-Fence	27
Cellular Positioning	29
Low-voltage alert	30
Photo shot.....	30
SMS Configuration	31
Surrounding Setting and the information of device	32
IMEI	32
Language	32
Input / Output the setting file.....	32
Radar Speed Camera Detector.....	34
1- Switch On.....	34
2- Radar Speed Camera Detector - System Function Setting.....	35
3- Driving mode setting.....	36
4- Radar Signal Detector Setting.....	37
5- The introduction of self-created coordinate.....	37
Constant Speed Setting and Collect the relative consider value.....	39
GPS and Specification of Radar	39
Instruction of E-dog driver downloading and installation	40

Warranty Service and Responsibility

The information contained in this document is proprietary and confidential information of Sheng Jay Automation Technologies Co., Ltd. Any unauthorized reproduction, use or distribution is strictly prohibited.

This document and information is intended solely for authorized hang Jay Automation Technologies Co., Ltd. customers as permitted by Sheng Jay Automation Technologies Co., Ltd. and for the limited purposes set forth herein.

The incorrect installation or utilization could cause damage to device or user. We shall not be liable for result, incidental damages or other losses that incurred by user in relation with user's mistake to obey the information and instructions contained herein. The product is designed to record, store, play and analyzes videos caused by impacts but we do not guarantee the product records every event without missing. Furthermore, if the impact is too weak, the vibration sensor may not be able to detect the impact, which induces that the system will be unable to automatically start recording the video file. The information within this manual may change without notice due to technical changes or upgrades.

Over view

This product provides the precise and stabile GPS function. Include the speed cameras detector function voice warning and anti-theft system. You can use this by easy installation.

Speed Camera Detector

It alerts you kinds of speed cameras. Radar Detector and database are built-in L869. GPS system starts to work after being turned on. The front panel displays your direction and GPS time.

Vehicle monitoring system

Highly sensitive GPS chip and localization sensors can trace your position and send the location where you are to the cellphone or IP address.

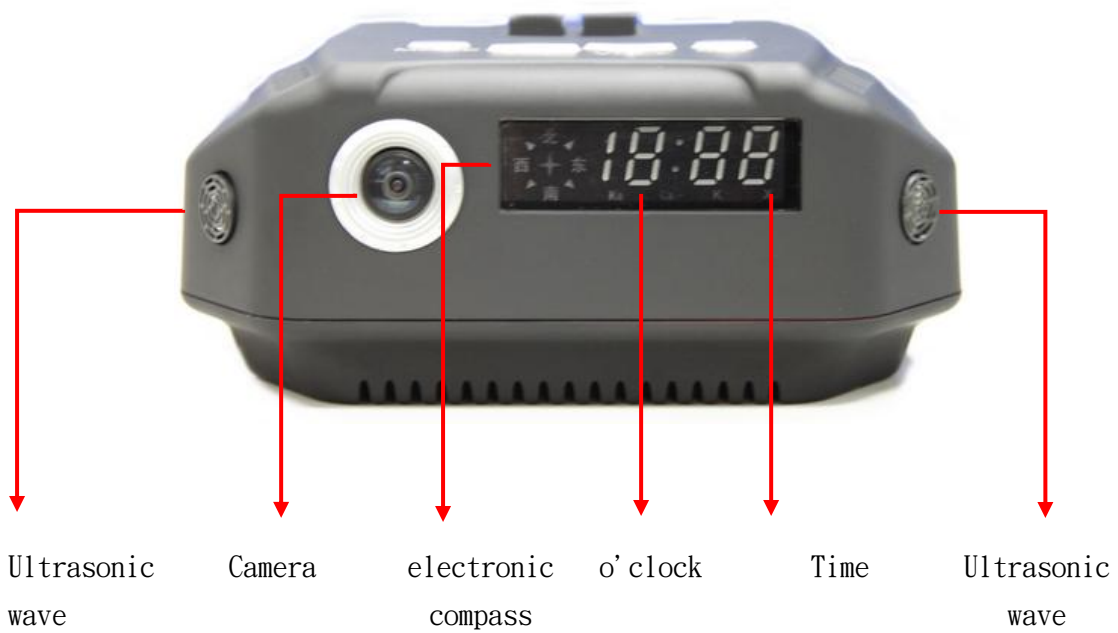
Anti-theft system

Ultrasonic wave and G-sensor detect unusual invasion, break of car window and tow. Front lens take pictures and store in Micro SD Card which is built-in, after warning mode being started. L869 is different from the other speed camera detector, it can provide you a more detailed situation in your car.

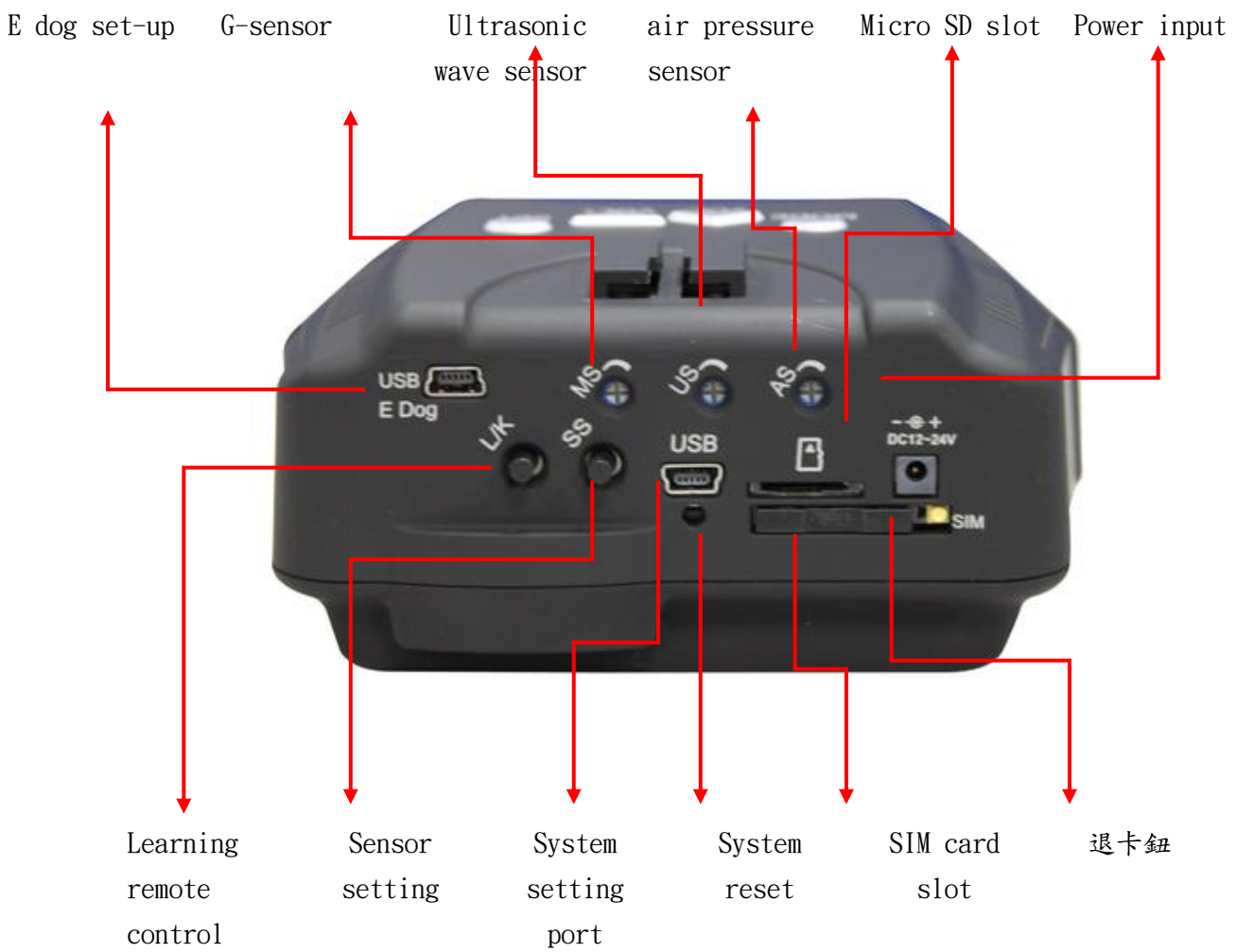
Standard Package

		
Device	RF remote-control	Car Charger
		
USB extension cable	Software CD	

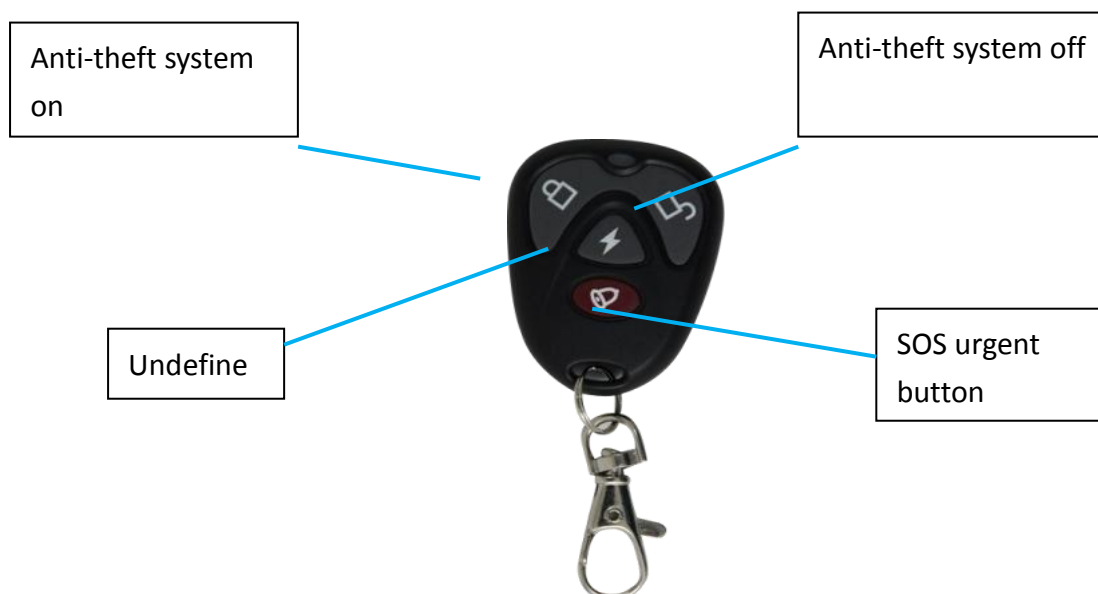
Appearance



Appearance2



RF remote-control



Hardware

1. Use tool to take out SIM card socket



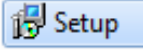
2. Insert the SIM card, with the chip side on the top. Please remember to remove the PIN code in your SIM card before setting.



3. Set Micro SD card in your SJ-L869. The Micro SD card supports up to 2G.

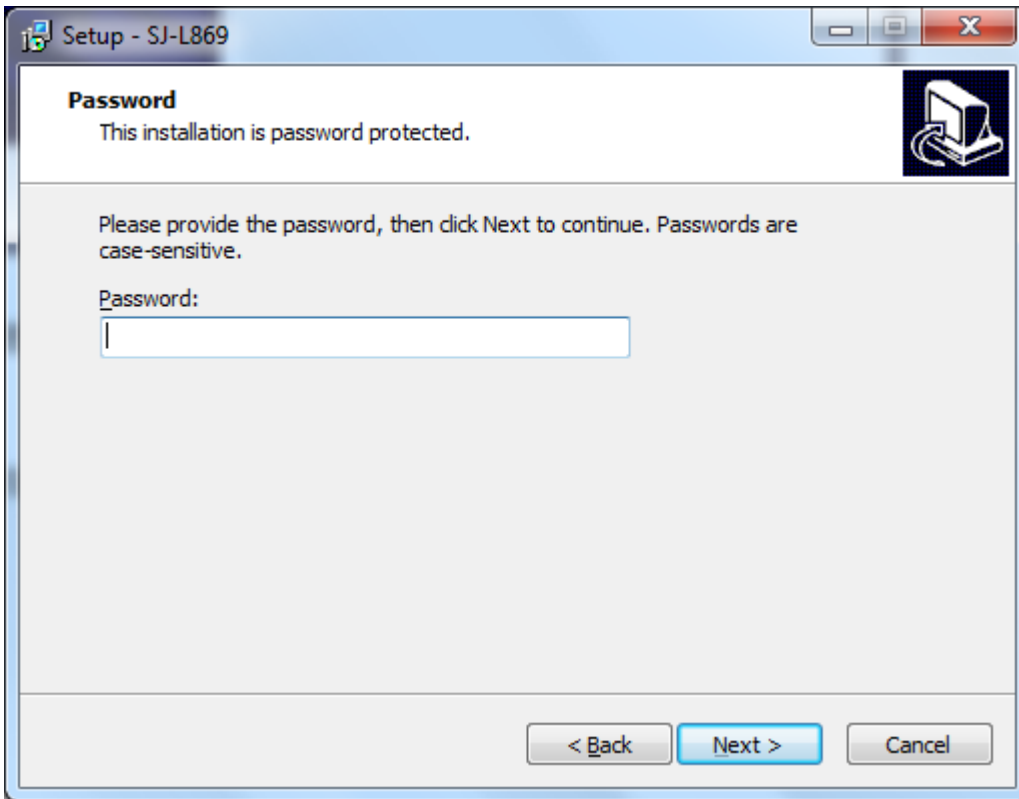


Installation Steps

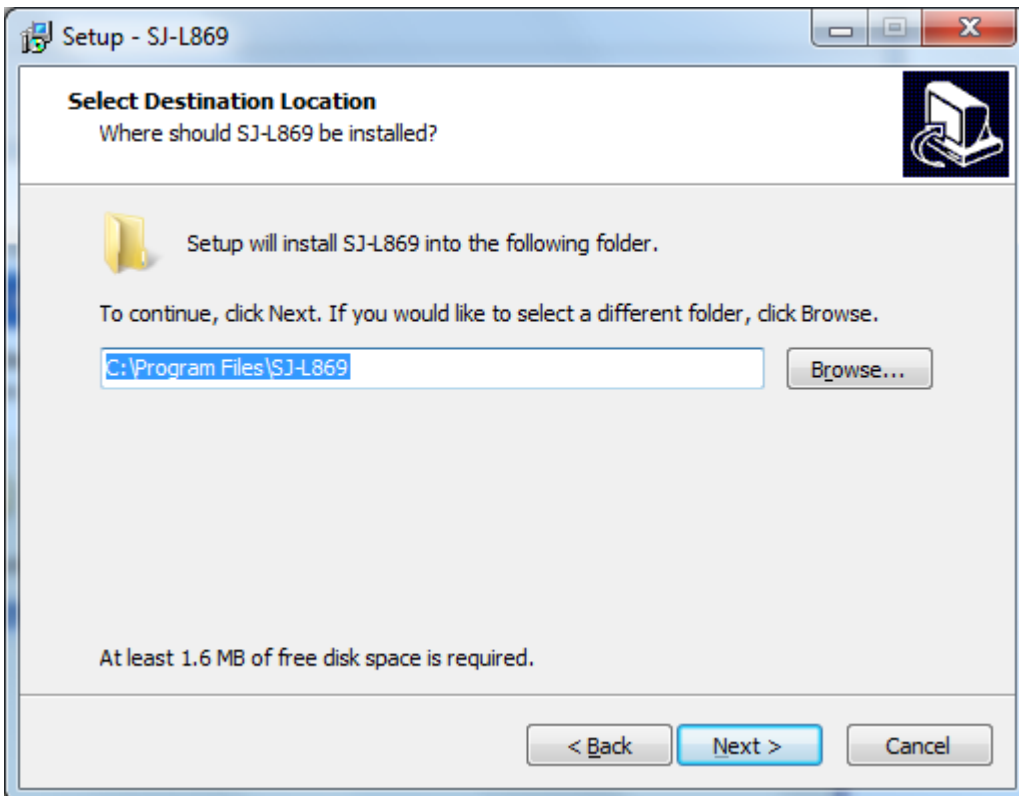
1. Execute the Setup file in CD , open the setup interface, and click Next.
2. Execute the Setup file in CD, open the setup interface, and click next.



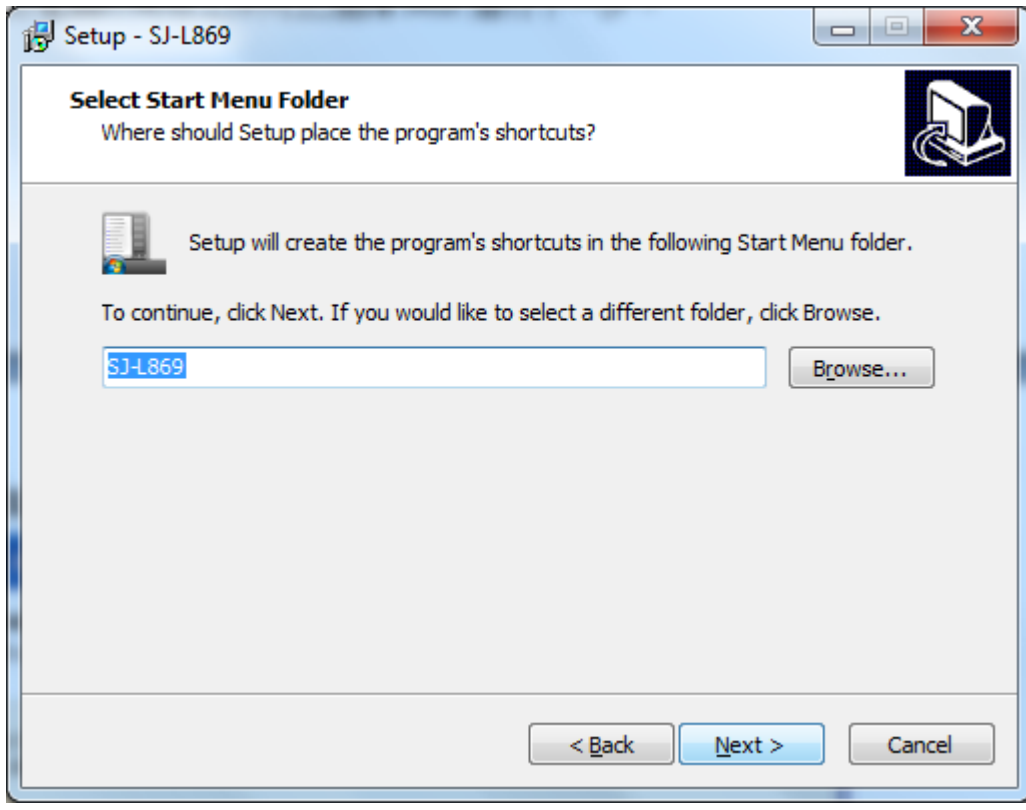
3. Enter the password 「sja」 with lowercase and click Next.



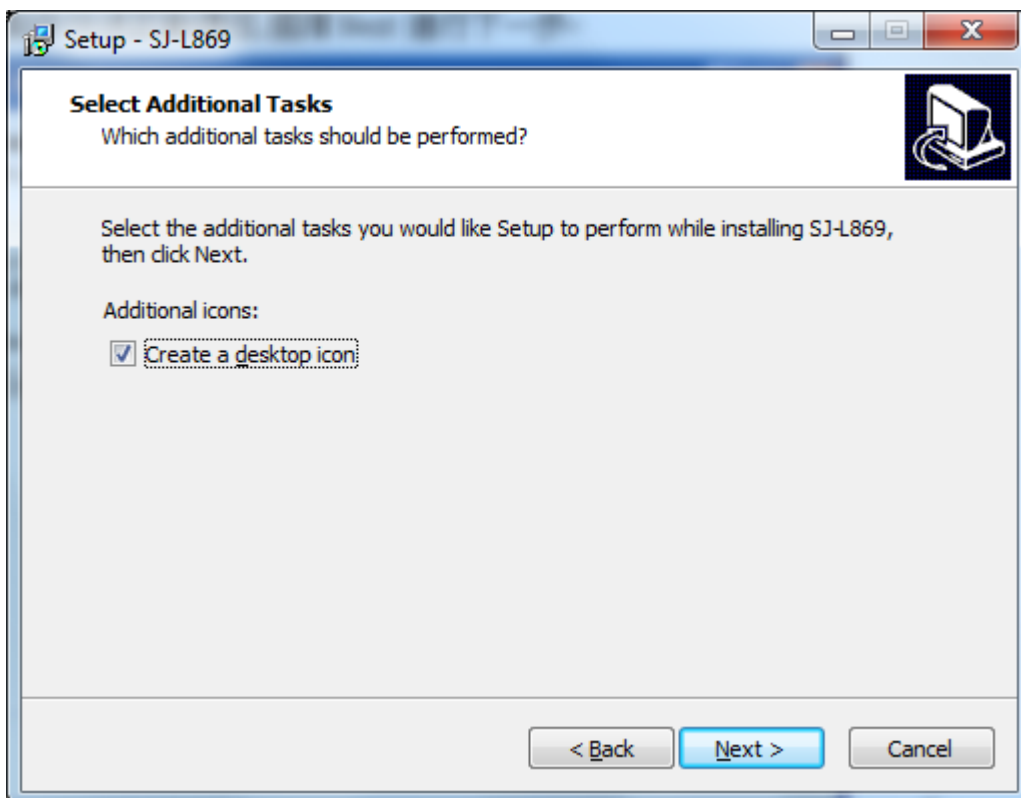
4. You can also select the destination location and click Next.



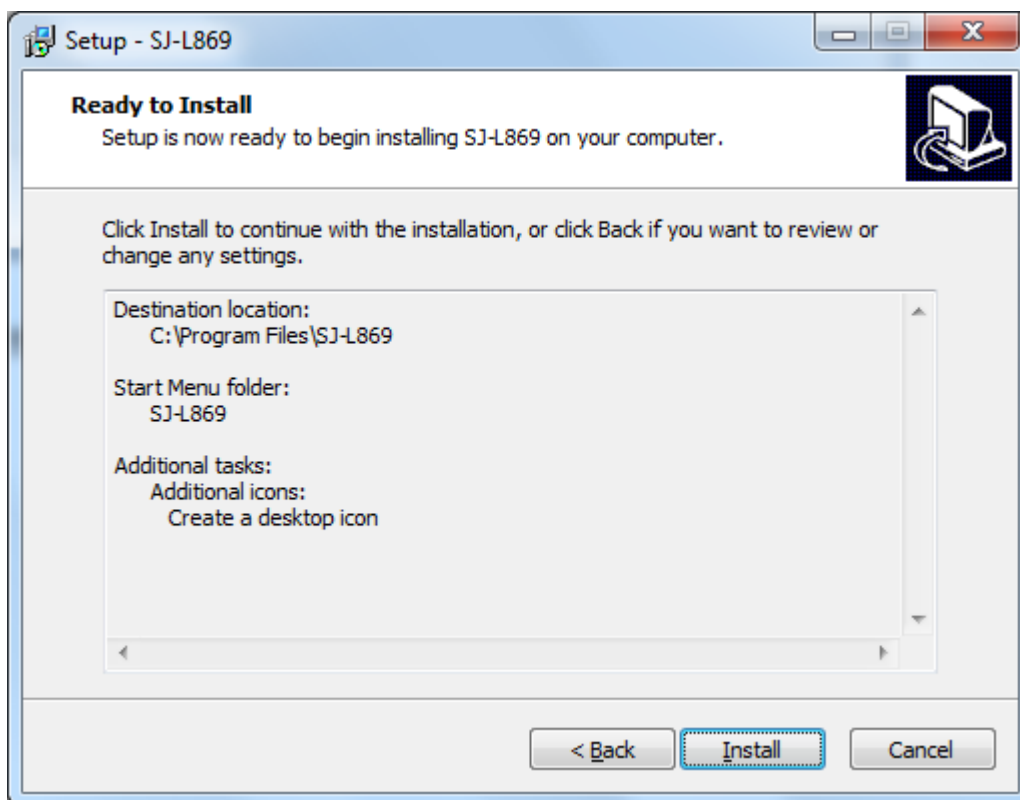
5. Install it in the following Start Menu folder, You can designate any name you like, set it as SJ-L869, and click Next to continue.



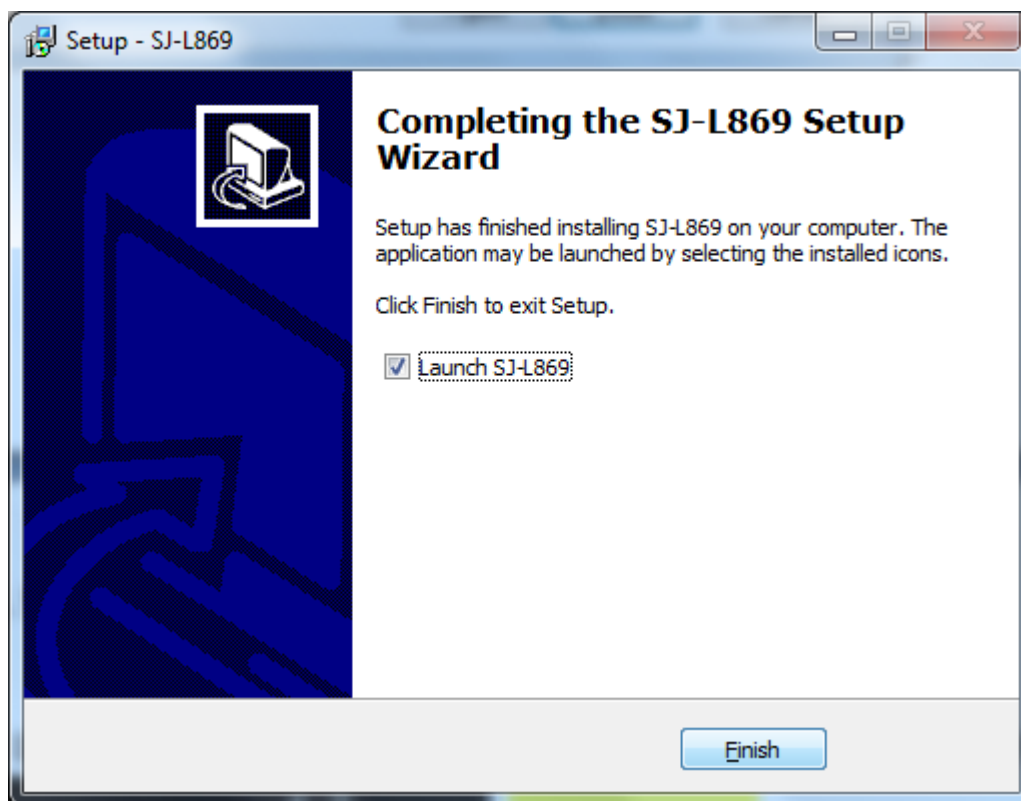
6. Create desktop icon, and click Next.



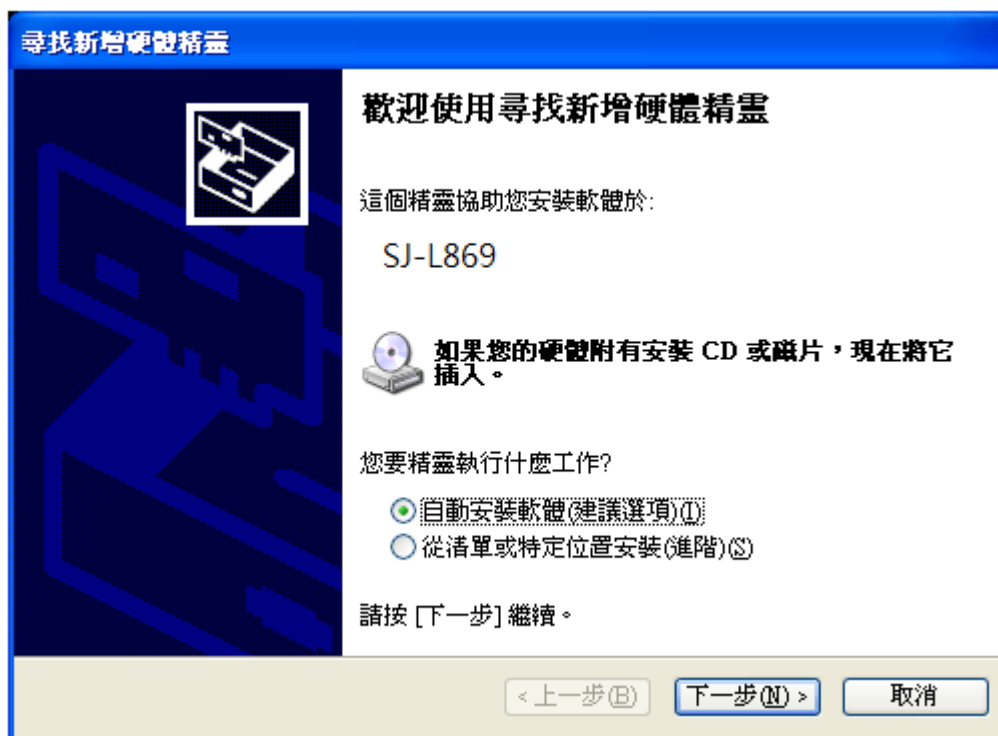
7. Click install to continue with the installation.



8. Click Finish to exit Setup.



9. Link the set-up port of SJ-L869 by USB extension cable, the computer would search Driver automatically. Click automatic set-up software to continue.



SJ-L869

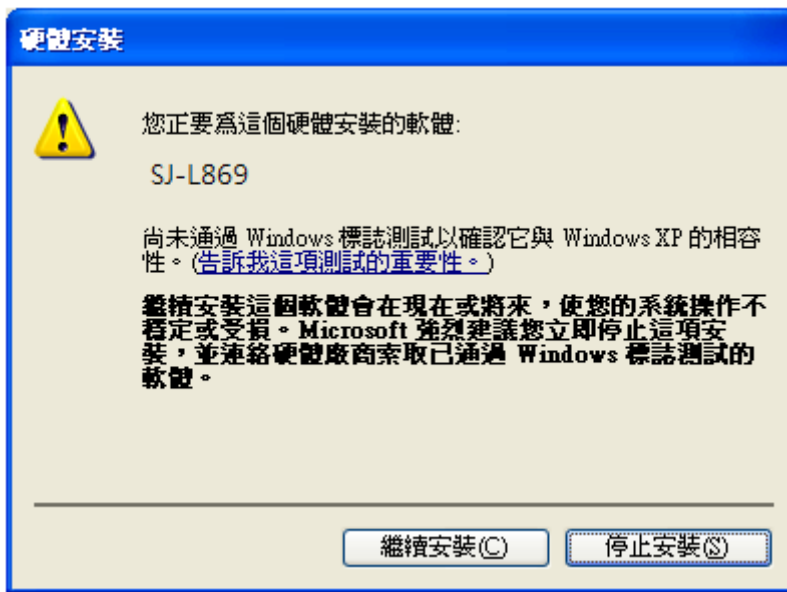
10. Waiting for searching.



11. Select SJA-SJ-L869 in the list and click Next.



12. Click keep setting.

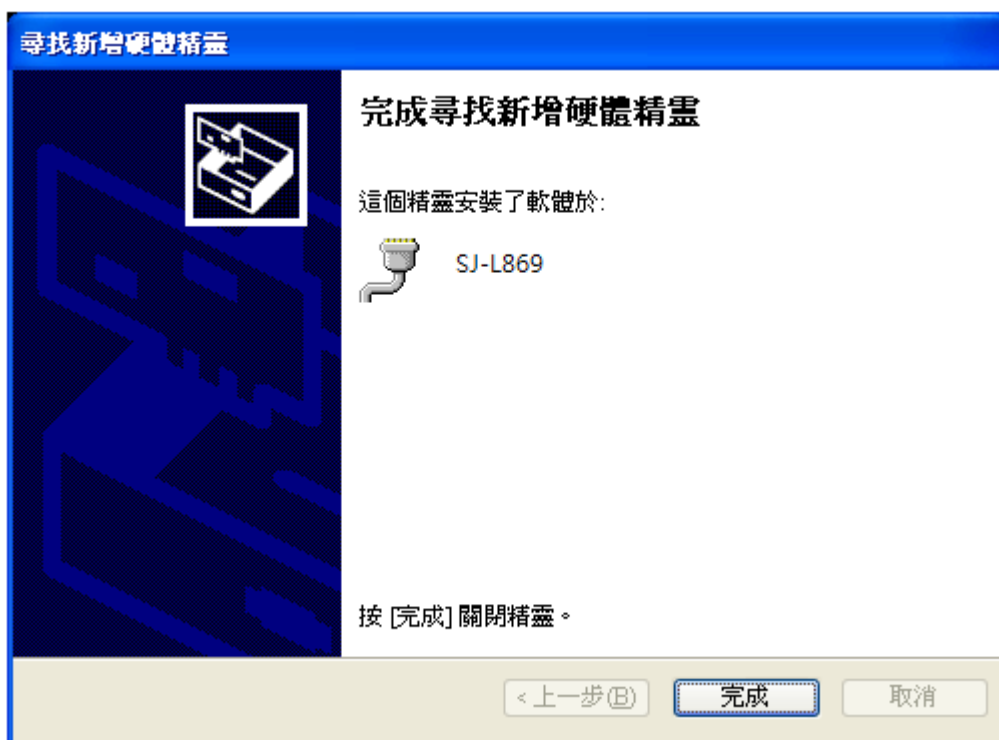


12. Waiting for the setting finished.



13. Click Finished, you can find the execution files on desktop, click it to enter the setting

list.

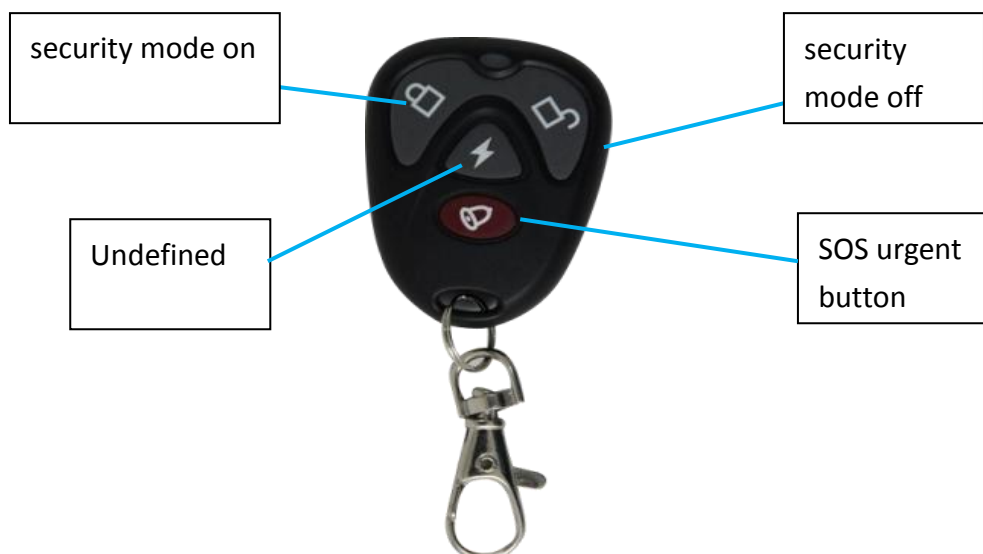


Installation position

※A and B are propositional Installation position



Learning the remote control



1. Hold the LK key on the interface of SJ-L869 for 5 seconds until L/K being light on.
2. Press any key of the remote controller.
3. The device buzz four times, when it has learnt the controller. Up to 4 remote controllers supported.

Remote Controller buzz table

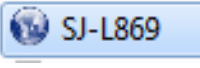
Type	Beep frequency
The device can receive no more remote control(Received over four pieces)	1 time
The remote control received successfully	4 times
The remote control have already been set	1 time

Reset the default settings

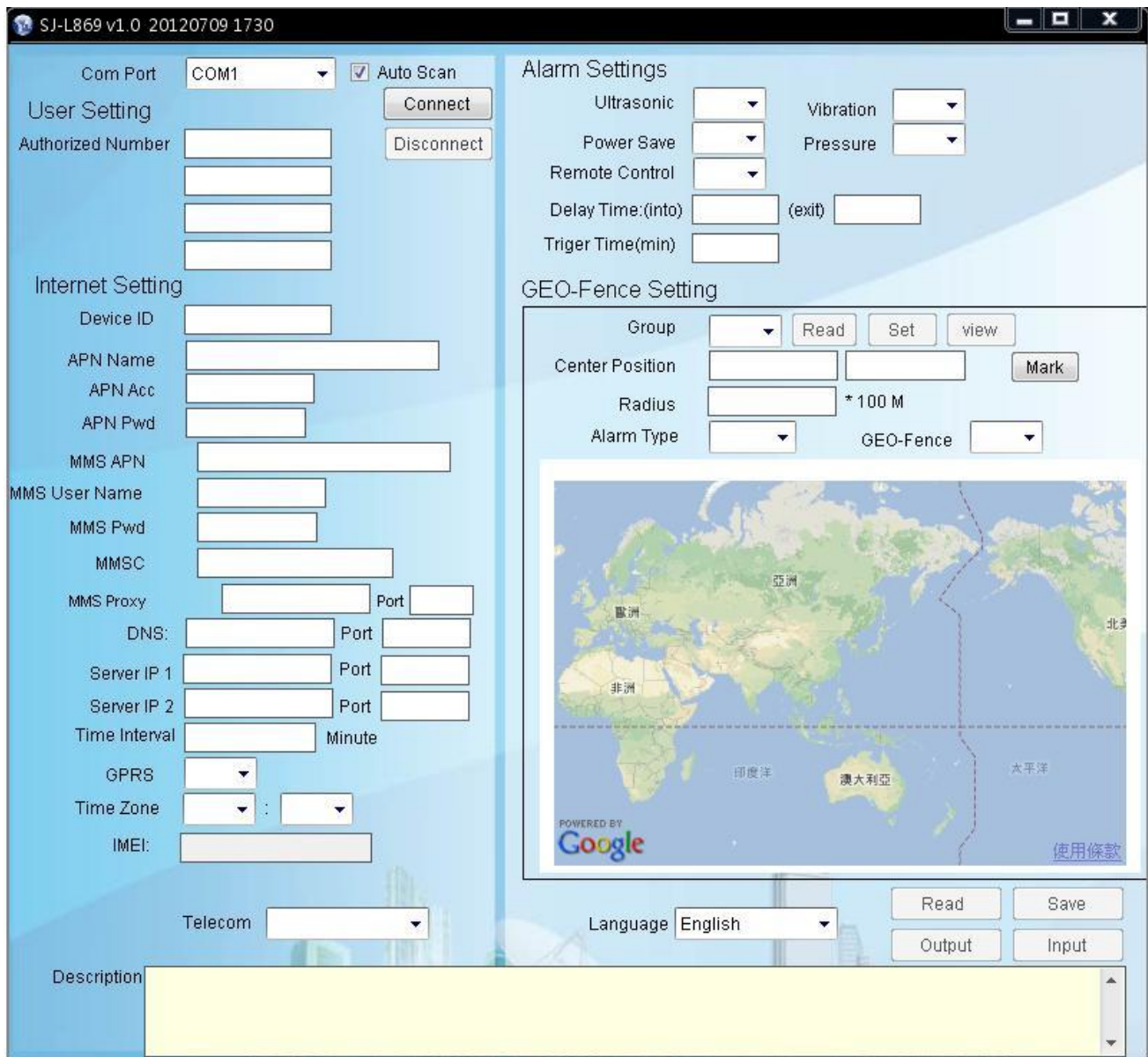
When the device was shut down, press the reset key on the device until hearing beep for 3times. It will be reset the default settings.

Software Setting

Please install the file of dotNetFx40 in the CD if you can use software settings.

Run the “SJ-L869.exe” 

Connect the USB extension cable to SJ-L869 and your computer.



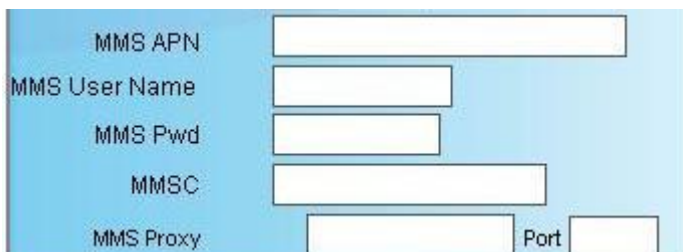
設定介面

Multimedia Message Setting

SOS、siren will send a multimedia message to the phone number you register.

You have to finish the multimedia register. The message setting is different according to different telecommunications

Please acquire the correct setting with the SIM card telecommunications.

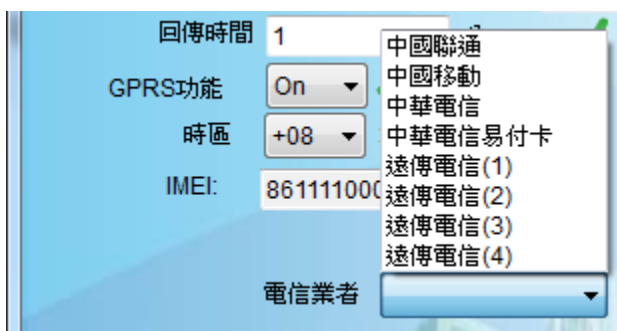


A screenshot of a mobile phone's MMS settings screen. The background is light blue. On the left, there are labels for 'MMS APN', 'MMS User Name', 'MMS Pwd', 'MMSC', and 'MMS Proxy'. To the right of each label is a white text input field. The 'MMS Proxy' field is split into two parts: a larger field for the proxy address and a smaller field labeled 'Port'.

How to Set

1. Click “Connect”
2. Key in the SIM card setting mobile number in authorized number No.2 /No.3/No.4
3. Click “Set” to save your personal setting
4. Click “Disconnect”

※You can click the list to find the SIM card telecommunication and use the setting built in multimedia message setting.

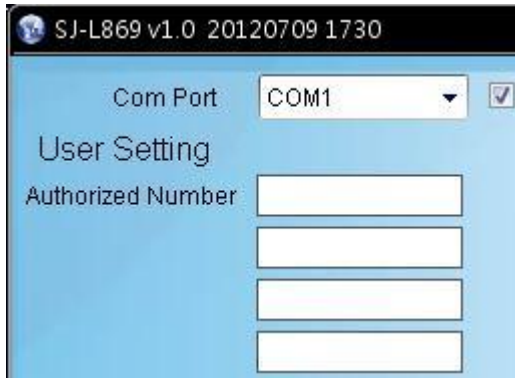


A screenshot of a mobile phone's settings menu. The background is light blue. On the left, there are labels for '回傳時間' (Return Time) with a value of '1', 'GPRS功能' (GPRS Function) with a dropdown set to 'On', '時區' (Time Zone) with a dropdown set to '+08', and 'IMEI:' with the value '861111000'. On the right, there is a dropdown menu for '電信業者' (Telecommunications Provider) which is currently open, showing a list of options: '中國聯通' (China Unicom), '中國移動' (China Mobile), '中華電信' (China Telecom), '中華電信易付卡' (China Telecom Prepaid Card), '遠傳電信(1)' (FarEasTone Telecom (1)), '遠傳電信(2)' (FarEasTone Telecom (2)), '遠傳電信(3)' (FarEasTone Telecom (3)), and '遠傳電信(4)' (FarEasTone Telecom (4)).

Authorized Number

Security alarm、SOS alarm、Low battery alert SMS and SD Card warning SMS will be sent to the authorized number

Only authorized number can change the L869 setting via SMS. The unauthorized number will not get any reply from L869



How to set

1. Click "Connect"
2. Enter your mobile phone number
3. Click "Set" to save your personal setting
4. Click "Disconnect"

SOS number table

Function	順序
Ultrasonic / Air pressure / Vibration	Send to the 1 st .2 nd .3 rd .4 th authorized number
SOS-message	Send to the 2 nd .3 rd .4 th authorized number
Without Micro Card	Only send to the 1 st authorized number
Low battery warning	Only send to the 1 st authorized number
APN setting error	Only send to the 1 st authorized number

SOS – Send MMS Message

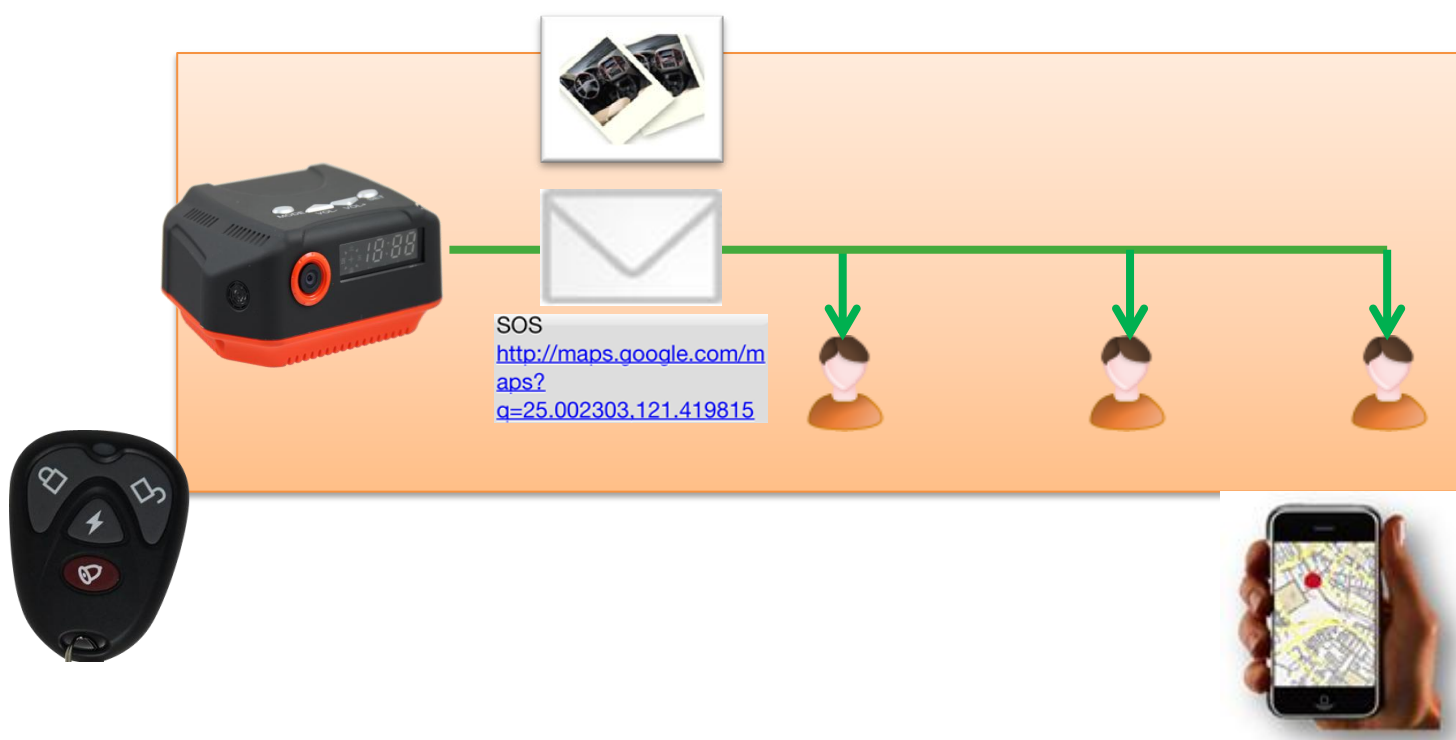
Press SOS button on the remote controller to make vide call to authorized number.

The L869 will call to second authorize number first.

If second authorized number does not pick the phone, L869 call next (third) authorized number.

Priority call: Authorized number NO.2-> NO.3-> NO.4 X 3 rounds

After pressing SOS button, the L869 will



SOS !

!

How to Set

1. Click “Connect”
2. Key in mobile number in authorized number No.2 /No.3/No.4
3. Click “Save”
4. Click “Disconnect”

5. Press the SOS button on the remote controller

※Make sure your remote controller has been learnt by the device . Please refer the “RF Remote Controller selection” and “The Setting of Multimedia Message.”

GPS real-time position tracking via mobile

Send SMS to the L869get the location map.

Send LOCATION to the L869

L869 reply a SMS “TRACKING PLEASE WAIT” message first then send second SMS message which is including map link to the user

※ It can only request the location of L869 by SMS of SOS reply number.

Location



Location

※If you would like to know about more functions, you can read “SMS remote control”

GPS real-time position tracking via server

L869 sends data to the remote server by GPRS continuously.

User can see the real-time status of SJ-869 on the server

※Before it work, please confirm that the CPRS of your SIM card has been activated with the telecommunication.

Internet Setting

Device ID

APN Name

APN Acc

APN Pwd

MMS APN

MMS User Name

MMS Pwd

MMSC

MMS Proxy Port

DNS: Port

Server IP 1 Port

Server IP 2 Port

Time Interval Minute

GPRS

Time Zone :

IMEI:

Telecom

How to set

1. Device ID
2. Name an ID for the device. The device ID will be show on Server. 2-12 bits upper and lower case English letters allowed.
3. APN Name
Input APN of the SIM card to activate the GPRS.
Please contact your SIM card provider to get the APN.
4. APN Acc/Pwd
Put in APN Username and Password of the SIM card to activate the GPRS.
Please contact your SIM card provider to get the APN Username and Password
5. DNS (Domain Name System)
Put in your DNS name of the server. Device will send the GPS data to the server.
If DNS link is failed or column is empty, device auto-connect to Server IP_1
Device server connection priority DNS > IP 1 >IP 2
6. Server IP_1

Set an IP address and port for your server.

If Server IP_1 link is failed or input column is empty, device auto-connect to Server IP_2
Device server connection priority DNS > IP 1 >IP 2

7. Server IP_2

Set the backup IP address and port for your server. The server IP_2 will assign an IP address to the device, when it received a connect request.

Device server connection priority DNS > IP 1 >IP 2

8. Time Interval

Define the time interval of the GPRS transmission.

Setting range is from 001 to 120 Minutes EX: 001 . Send data to server per one minute

If you don' t know the setting of APN, account and password in your SIM card, you can try to click the setting built-in the list of telecommunication.



Security Alarm



Press the “Security on key” on the remote controller to activate the security system
If one of security sensor has been triggered, the L869 will send a picture to authorized number to notice the car owner while detecting any unusual invasion. Authorized number pick the phone call and press key “5” to confirm the call to see the video

How to set

1. Connect
2. Start the sensor you want to use, ultrasonic, air pressure or vibration.
3. Save setting



※You have to complete MMS Message Setting before Alarm Settings.

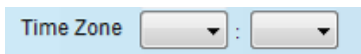
Security Alarm sensitivity

You can change the sensitivity of the sensor by adjusting the VR



Right turn is sensitivity high, Left turn is sensitivity low

Time Zone



Set your time zone in your area

Geo-Fence

GEO-Fence is a virtual perimeter for a real-world geographic area.

You can set 5 GEO-Fences for the L869. Geo-fence can be a predefined set of boundaries by user; the boundaries could be set from 100 meter to 25.5 KM.

If you come into or out of the Geo-fence (boundaries), L869 will send a message “GEO-Fence ALARM” by SMS to user. Also, it sends alert to remote server if GPRS is available.



How to set

1. Click to connect
2. Enable Geo-Fence
ON: Activated the GEO-Fence function
OFF: Disable the GEO-Fence function
3. Select the Group 1- 5
4. Choose your location on the Map

Map Zoom in

Double click mouse left key or Mouse scroll wheel forward

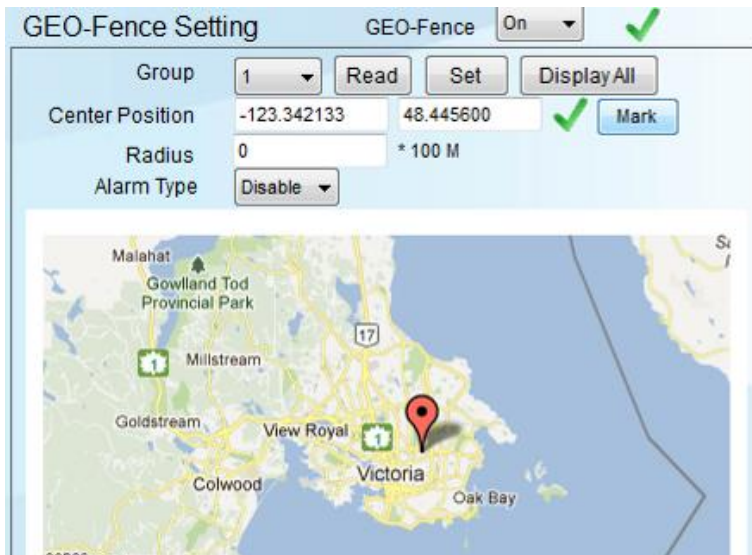
Zoom out

Double click mouse right key or Mouse scroll wheel backward

5. Mark your location

Click a location that you wanted on the map, and you can see a red balloon on it.

Click “Mark” key to request the latitude and longitude of the marked position on the map and display at Center Position column.



6. Define the Radius of your location

Define the radius of marked position

Define range from 0 to 255 (per 100 M).

Put 3 digital numbers to define the radius of the GEO-Fence.

EX: 100 = 10 Km



7. Alarm Type

Disable: Disable this group

Enter: when enter this area alarm

Leave: when leave this area alarm

8. Set

Set the GEO-Fence range

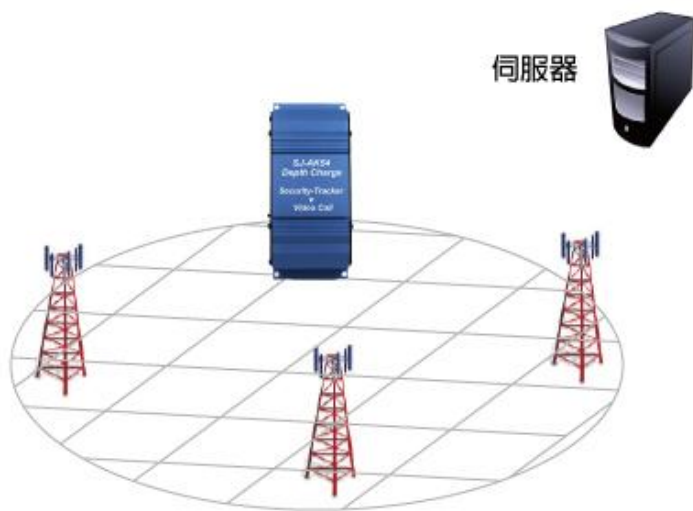
9. Click view

Display all group setting to ensure you get the all Geo-fence you needed

- Click the set
Save

Cellular Positioning

When L869 is indoor or the GPS signal is too weak, L869 will use base station to position and send based station information to the ALARM number. Use the based station position, it will be a range area not a position location.



Low-voltage alert

The Low battery SMS will be sent to first Authorized number.

L869 detect the voltage of the battery to make sure device work well.

When the voltage of the battery is low, L869 sends the SMS immediately to alert the authorized user.

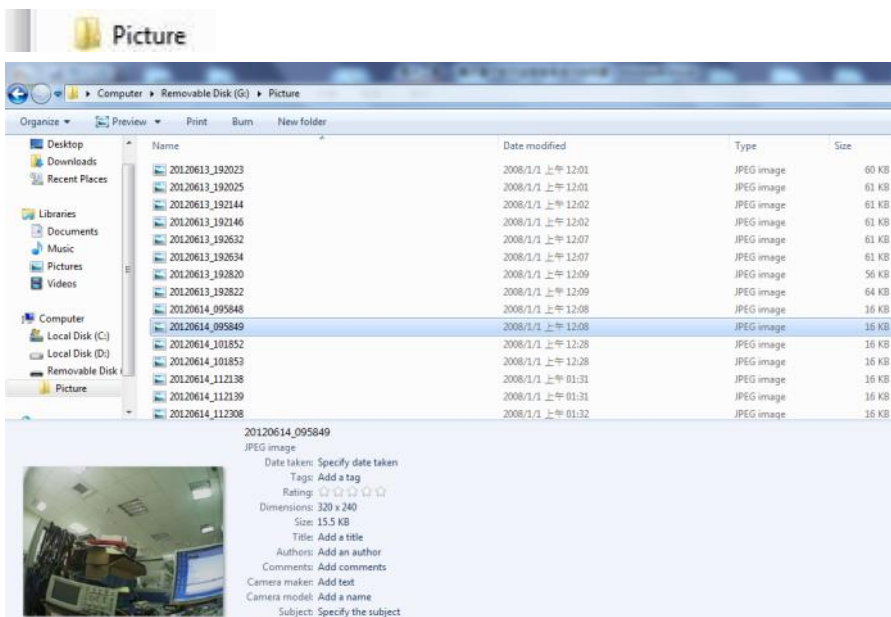
Photo shot



Photo shot

When SOS or Alarm activated, the external cameras will totally take two photos.

You can find your photo in Picture folder in the micro SD card



※When the micro SD card memory is 80 % full, the L869 will send a SMS message to the first authorized number.

SMS Configuration

Authorize number

Security alarm、SOS alarm、Low battery alert SMS and SD Card warning SMS will be sent to authorized number

SMS: AUTHOR:number

Use “/” to input more number. 4 sets maximum

EX: AUTHOR:0912345678/0923456789/0913673079/0913654679

L869 reply AUTHOR:0912345678/0923456789/0913673079/0913654679 ok

Location

Check the current location the L869. L869 will send a Google Map link to the SMS sender

SMS: LOCATION

L869 reply “TRACKING PLEASE WAIT” and Google Map link

Security alarm on

Activate Security mode.

SMS: ALARM ON

L869 reply: ALARM ON ok

Security alarm off

Deactivate Security mode.

SMS: ALARM OFF

L869 Reply: ALARM OFF ok

ReSeT

Erase the setting of the L869

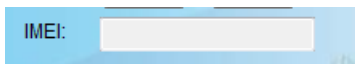
SMS: ReSeT

AK Reply: ReSeT ok

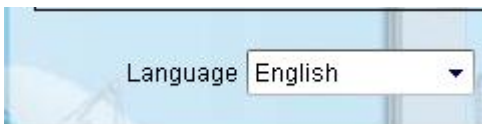
Surrounding Setting and the information of device

IMEI

Check device' s IMEI code by click "Read"



Language



Change the software display language. It supports Traditional Chinese / Simplified Chinese / English.

Input / Output the setting file

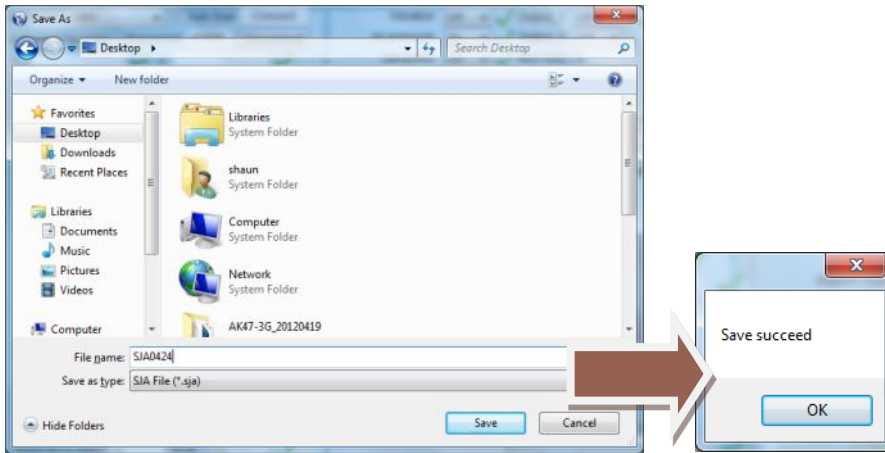
Save this setting to another file, it can be completely imitate afterward.



Output

Click the Output to export the setting file

Name your setting file. *.sja

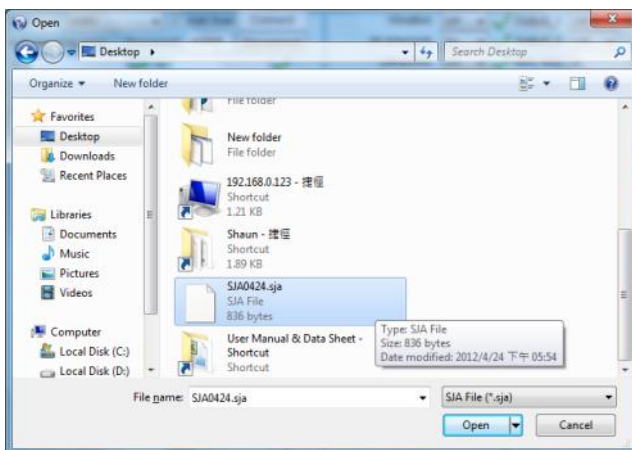


Input

Click the Input the load the setting file.

Select the setting file *.sja

Click open

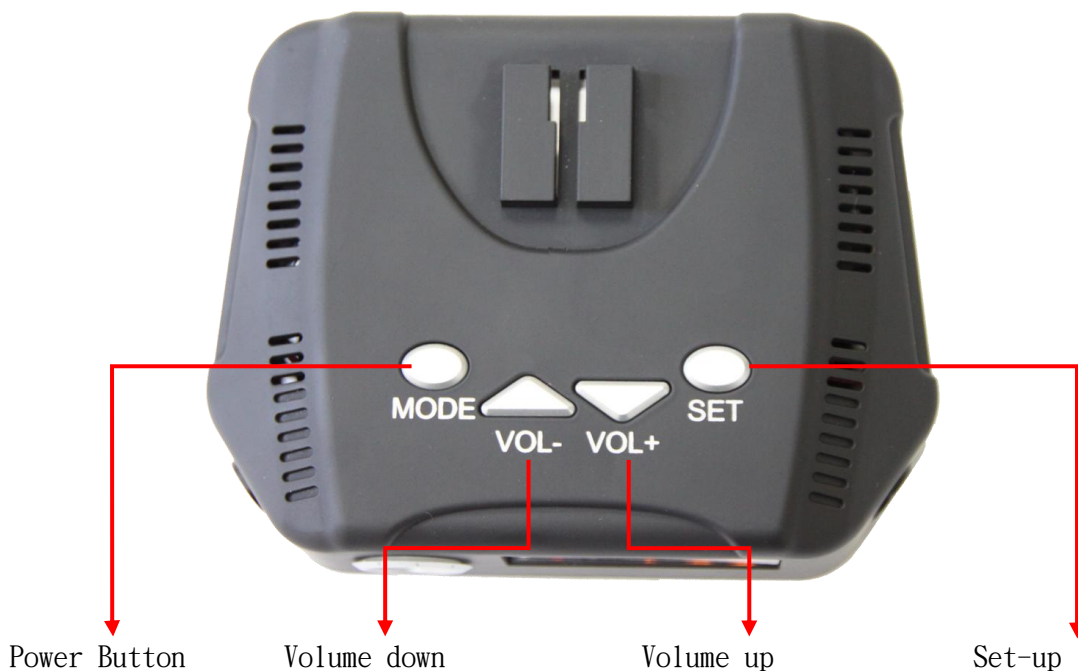


Radar Speed Camera Detector

Detect kinds of speed camera detector on the way, and built-in e-dog radar detector and complete data bank. Start to mark your GPS position after being turned on, and the panel supports electronic compass to display your direction and GPS time.

■ Base function

The instruction of main button



1- Switch On

1. It displays the LED test while being switched on at the first, LED panel light on and display electronics compass, radar frequency, distance and speed.
2. Shows the status of device, [The GPS radar is switching on, please fasten the seat belt]
3. The electronics compass of LED panel will keep twinkling on east, west, south and north in turn. When satellite connected, the electronics compass will display the direction, and play the sound track of [Hope you are safe to drive a vehicle]

2- Radar Speed Camera Detector - System Function Setting

1. System Function Setting

▲ Hold the **【SET】** key on the interface of SJ-L869 for 3 seconds until system function setting is available. After entering system function setting, everytime you press **【SET】** key for 1 second, you can select setting in turn, and hold the **【SET】** key for 3 seconds to save setting, or wait for backing to original screen automatically.

1.1 The radar mute setting could be set from 0 KM to 150 KM, you can adjust per 10 KM. The default is 50 KM. When the speed is low than 30 KM, the device would be mute automatically and only twinkles even if detected electric wave radar system. The system could block automatic door and the other noise interference in the city.

1.2 The exceed the speed limit setting could be set from 0 KM to 150 KM, you can adjust per 10 KM. The default is 150 KM. If you set 100 KM for speed limit, but you exceed over 100 KM, the system would make noise for the warning of exceed the speed until slow down to the setting. The function could be base station to position to warn the speed limit, and upload the data by base station to share with other users.

1.3 The fine tuning could be set from 0 KM to 20KM, The default is 50 KM. When the GPS speed is not identical with the car speed, you can adjust the GPS speed to be identical with the car speed, after observing average deviation.

1.4 You can adjust alarm voice setting to sounds and noise mode→sounds mode→continuous noise mode, three kinds of alarm voice modes are as below:

▲ Sounds and noise mode: in this mode, when the car approaching the warning point of the speed camera system, except announcing of the kind of speed camera, speed limit and countdown of distance, when the car speed exceed the limit of camera, the system would make **【Ding Dong】** warning noise automatically. When the car speed is lower than the speed limit, the system would stop making **【Ding Dong】** warning noise automatically, and keep countdown.

▲ Sounds mode: in this mode, when the car approaching the warning point of the speed camera system, the system would announce the kind of speed camera, speed limit and countdown of distance, whether the car speed exceeds the speed limit or not, the system would not make 【Ding Dong】 warning noise.

▲ Continuous noise mode: in this mode, when the car approaching the warning point of the speed camera system, the system would announce the kind of speed camera, speed limit and countdown of distance, whether the car speed exceeds the speed limit or not, the system would make 【Ding Dong】 warning noise until passing the warning point of the speed camera system.

1.5 Delete the self-created coordinate, the storages limit to 256 records. This function could fix position in favourable coordinate, and collect the coordinate of opposite direction

1.6 Set the tiome of light on mode, the default is 7 a.m.

1.7 Set the dimness mode, the default is 6 p.m. Set your time zone in your area.

3- Driving mode setting

▲ Hold the 【VOL-】 key on the interface of SJ-L869 for 3 seconds until driving mode setting is available.

2-1 Save driving mode could not only remind the user fixed speed camera location and distance countdown, but remind such as the locations which accidents often occur, the markets, the schools, the gas stations, the tollbooths and so on. To make the users know the situations on the way well.

2-2 Speed camera mode would only remind the user fixed speed camera location and distance countdown, but not remind such as the locations which accidents often occur, the markets, the schools, the gas stations, the tollbooths and so on.

2-3 The function of save driving mode is the same with the description of 1-1, but it would not announce the speed limit in the warning section.

2-4 The function of speed camera mode is the same with the description of 1-2, but it would not announce the speed limit in the warning section.

4- Radar Signal Detector Setting

▲ Hold the **【+】** key on the interface of SJ-L869 for 3 seconds until radar signal detector setting is available.



▲ ultrahigh level: radar signal detector setting is ultrahigh, it is recommended to use while driving in highway.

▲ high level: radar signal detector setting is high, it is recommended to use while driving in highway.

▲ medium level: radar signal detector setting is medium, it is recommended to use while driving in city.

▲ Low level: radar signal detector setting is low, it is recommended to use while driving in city.

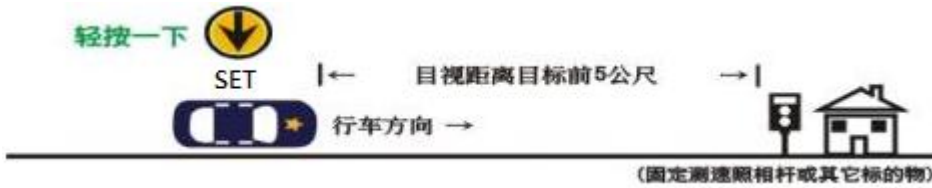
5- The introduction of self-created coordinate

The product is built-in 256 record of huge capacity. It provides the user set coordinate warning location and fix the warning by limit setting. After finishing setting, while the user passes by the self-created coordinate, the system would announce **【the self-created coordinate is ahead, please drive with caution】** and display distance countdown. (if the user is under the limit speed, it announces **【the self-created coordinate is ahead, limit speed XX KM, please drive with caution】** while passing. After passing the coordinate, the system would make a finished noise of self-created coordinate, the screen would display **【 PASS 】** at the same time.

How to collect self-created coordinate

Favourable self-created coordinate

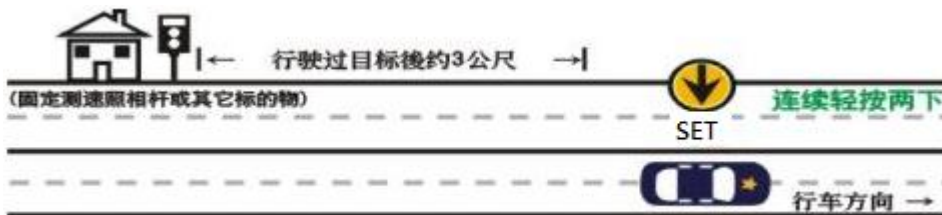
The diving direction is the same with photo shot direction. For example, the car drives to east, the user press **【SET】** key while being away from target 5 meters, after finished, the system announces **【self-created coordinate finished】**. Please refer to the illustration of details:



▲ The user press **【SET】** key while being away from target 5 meters, after finished, the system announces **【self-created coordinate finished】** automatically. And returns to display the car speed after 2 seconds.

Contrary self-created coordinate

The diving direction is contrary with photo shot direction. For example, the car drives to west, the user press **【SET】** key twice times while being away from target 3 meters, after finished, the system announces **【contrary self-created coordinate finished】**. Please refer to the illustration of details:



▲The user press **【SET】** key twice times while being away from target 3 meters, after finished, the system announces **【contrary self-created coordinate finished】** automatically. And returns to display the car speed after 2 seconds.

Delete self-created coordinate:

▲ Delete single self-created coordinate: Please enter the delete setting of self-created coordinate, and press **【upward key】** or **【downward key】** to delete the self-created coordinate.

▲ Delete whole self-created coordinate: Please enter the delete setting of self-created coordinate, and hold **【SET】** key, then you can delete whole self-created coordinate.

Constant Speed Setting and Collect the relative consider value

	constant speed cruise (limit speed)	Collect distance (with the target)
1	10-30 KM	About 150 meters
2	40-60 KM	About 300 meters
3	0 or 70-80 KM	About 500 meters
4	90 KM	About 700 meters
5	100-150 KM	About 1000 meters

The rule of collecting self-created coordinate depends on constant speed. For example, when the user set the constant speed to 0 KM. the distance of user' s self-created coordinate is 500 meters, please refer to the diagram of constant speed.

GPS and Specification of Radar

Specification	Receiving Range	
Satellite receiving frequency	1.57542GHz \pm 1.023MHz	-110 \pm 2dB
X-BAND	10.525GHz \pm 100 MHz	- 110 \pm 2dB
K-BAND	24.125GHz \pm 175 MHz	-124 \pm 2dB
Ka-BAND	35.100GHz \pm 100 MHz	-115 \pm 2dB
Ka-BAND	34.700GHz \pm 1300 MHz	-115 \pm 2dB
Tripod Ka-BAND	34.300GHz \pm 1300 MHz	-115 \pm 2dB
Laser Beam	904nm \pm 33nm	
Anti-detect VG2	11.150GHz \pm 175MHz	
Power providing demand	DC12V	
Outputting electric current	\leq 300mA	
Operation temperature	-25 $^{\circ}$ C -75 $^{\circ}$ C	

Instruction of E-dog driver downloading and installation

▲ Enter SJA' s official website : <http://www.ecarfj.com>, and click the section of data downloading



1. Open the web page of downloading center, Log in with order number on the back of the product



2. click “**驱动下载** > ” to download the driver. (You have to upgrade the driver if it' s the first time)



3. Install the driver

Download the data of Driver.exe 文件 (If it' s blocked by firewall, please allow all operation.)



1. 点击“下一步”



2. 接受协议点击“安装”



3. 点击“完成”即可

If the driver starts to install, the screen would display:



点击“取消”，退出即可



点击“下一步”



点击“完成”即可

Instruction update the downloading and installation

Click the picture as  to download the data update



Execute the data update

Please confirm the device has been connect to the computer, and click Summit.exe



点击“下一步”



如果設備已經連接，“下一步”會亮起，點選下一步



请根据所在区域选择需要下载的数据即可

Instruction of area:

South area: HK, Macao, Taiwan, Guangdong, Fujian, Guangxi, Hainan, Hunan, Jiangxi, Shanghai, Zhejiang, Guizhou, Anhui, Jiangsu, Yunnan, Hubei, Chongqing

North area: Beijing, Henan, Hebei, Gansu, Heilongjiang, Jilin, Liaoning, Inner Mongol, Ningxia, Qinghai, Shanxi, Tianjin, Sinkiang, Tibet, Shanxi, Sichuan, Shandong

South and North cross area: Anhui, Henan, Jiangsu, Shandong, Shanxi, Sichuan, Tibet, Yunnan, Chongqing, Guizhou, Shanghai, Gansu, Beijing, Hubei, Tianjin, Qinghai